

ELLIOTTS

14 Southdown House, Hove

Price £325,000



SOUTHDOWN HOUSE
Flats 1 - 48 only
(Flats 49 - 78
on Somerhill Road) →





14 Southdown House, Somerhill Avenue

Hove, BN3 1RW

Elliotts are delighted to offer for sale an impressive raised ground floor apartment in this highly sought after modern purpose built block in the centre of Hove. Constructed in 2008 and situated in Somerhill Avenue which is just short stroll from St Ann's Well Gardens with its idyllic gardens, tennis courts and The Garden Café.

The apartment comprises an entrance hall, bedroom with en-suite shower room and a separate WC as you enter the apartment. Located to the rear and being a real feature is the open plan living, dining and kitchen space which offers seamless access to the West facing terrace and garden making this a superb area to enjoy the warmer days.

The apartment is offered for sale with no onward chain and it's also worth noting that the hot water and seasonal heating is included in the service charge.



- West Facing Private Garden
- Hot Water & Heating Included
- Underground Parking
- Open-Plan Living Area
- Modern Bathroom/WC

- 58 Sq.Mt
- Access to Residents Gym
- EPC Rating - Band B
- Double Bedroom
- No-Onward Chain



Further advantages of Southdown House is the access to a private gym which is available for all residents, along with No. 14 having access to a private underground parking space (No. 201). It is also worth noting that hot water and heating in the current services charges.

Accessibility at Southdown House is excellent with easy wheelchair access, making it inclusive for all individuals.

In addition to a beautifully landscaped communal entrance, this property features a range of amenities designed to enhance your lifestyle.

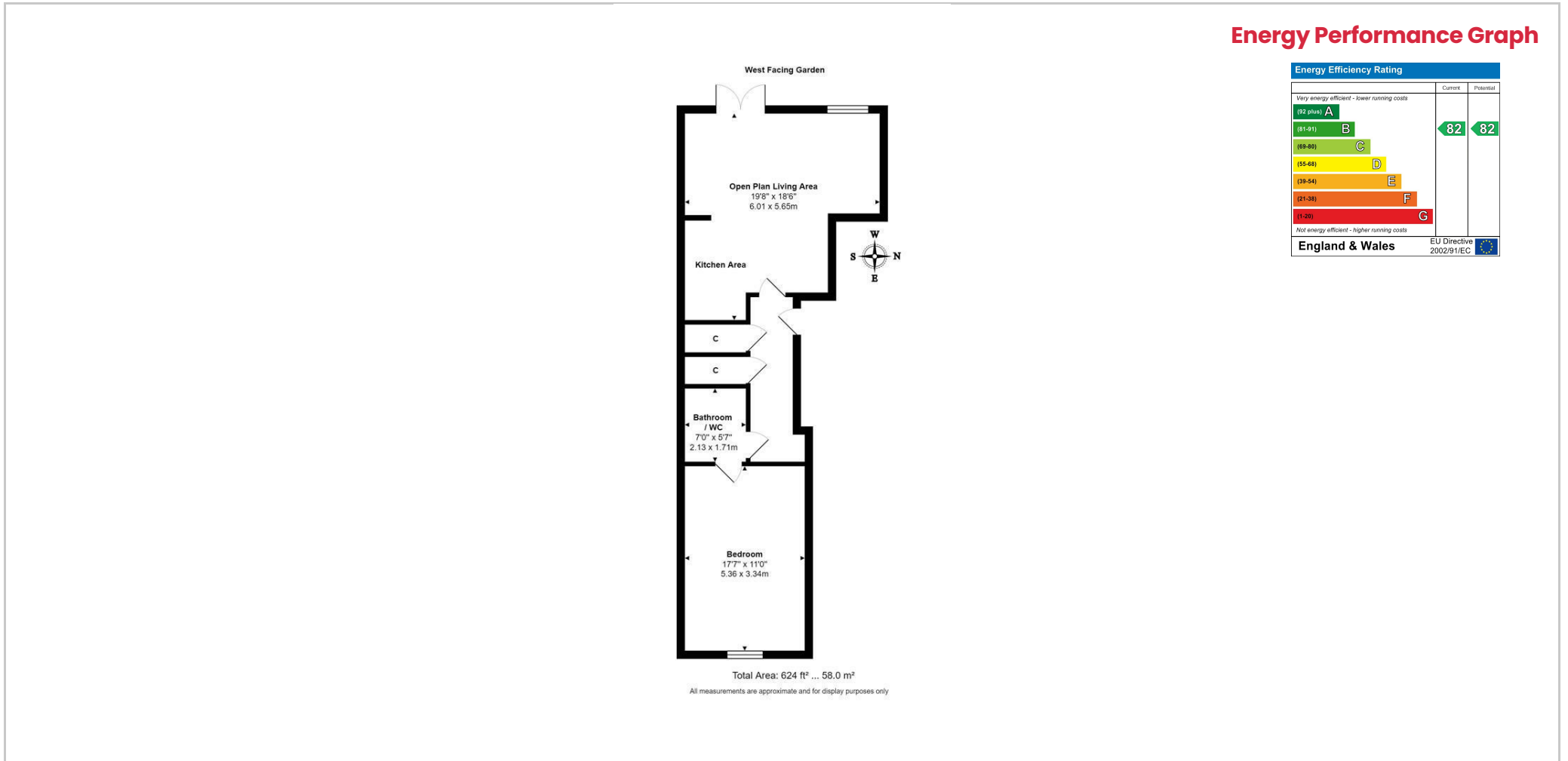
For those seeking open spaces to unwind and enjoy the outdoors, the large communal roof terrace offers stunning views across the city and seafront, offering ample space for relaxation or socializing with neighbours.

Located in the heart of Hove, the seafront, and the green open spaces of Hove Lawns, Palmeira Square and Brunswick Square are only a short walk from your door. St Anne's Well Gardens is a short walk away with tennis courts, green open space & café. Church Road and Western Road shops are also close by.





Floorplan



Viewing

Please contact us on 01273 773399 if you wish to arrange a viewing appointment for this property or require further information.

The particulars are set out as a general outline only for the guidance of intended purchasers or lessees, and do not constitute, any part of a contract. Nothing in these particulars shall be deemed to be a statement that the property is in good structural condition or otherwise nor that any of the services, appliances, equipment or facilities are in good working order. Purchasers should satisfy themselves of this prior to purchasing.

2 Church Road, Hove, East Sussex, BN3 2FL

Tel: 01273 773399 Email: mail@elliottsestateagents.co.uk Website: www.elliottsestateagents.co.uk