

3,31 First Avenue, Hove, BN3 2FH

Guide Price £400,000 - £425,000

ELLIOTTS



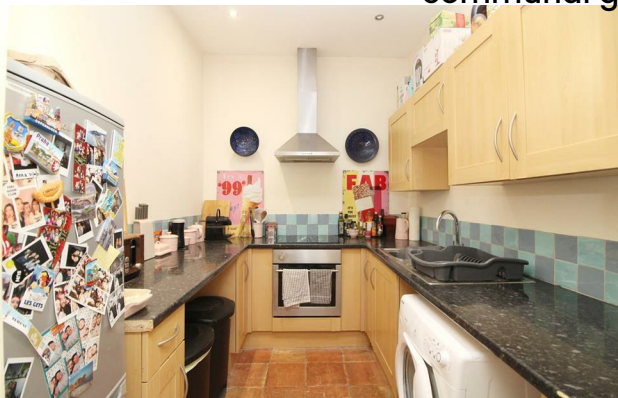
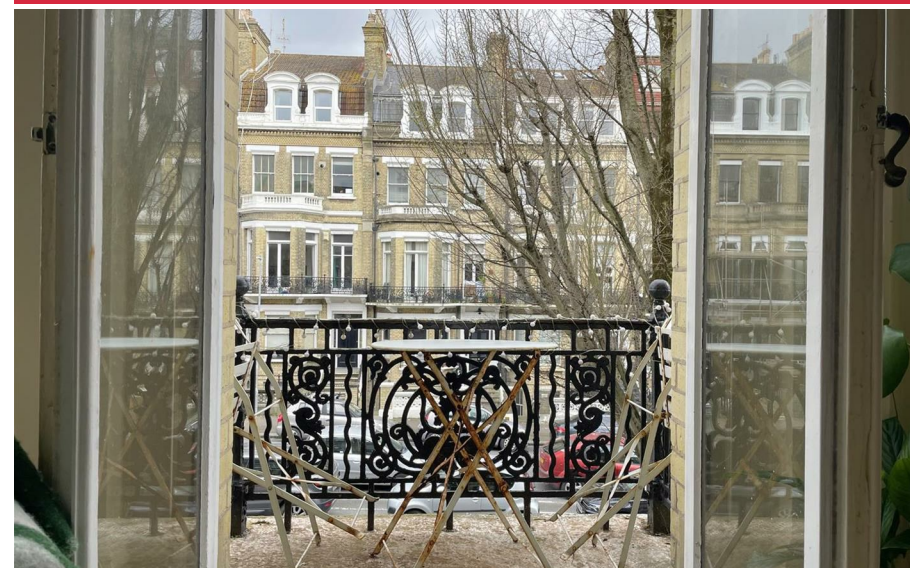


3, 31 First Avenue, Hove, BN3 2FH

GUIDE PRICE £400,000 – £425,000

Elliotts are delighted to offer for a sale a well presented first floor flat, located just a stone's throw away from Hove seafront. This beautifully presented residence boasts a plethora of desirable features, including a spacious lounge adorned with high ceilings and access to a balcony. The property also benefits from two double bedrooms, separate kitchen and a bathroom/WC.

With its prime location near Hove seafront and its close proximity to the vibrant amenities of Church Road, this first floor flat presents the perfect opportunity for those seeking a stylish and convenient living experience with the added benefit of being sold with no-ongoing chain and a communal garden to the rear.



- **No-Ongoing Chain**
- **Balcony**
- **First Floor**
- **Walking Distance to Hove Seafront**
- **Communal Garden**

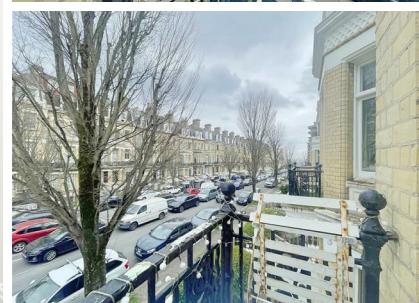
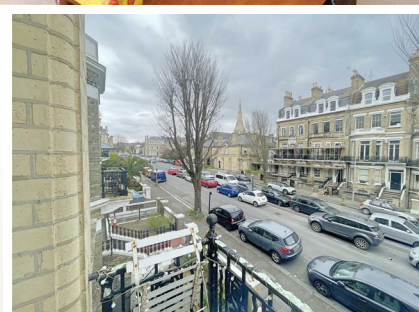
- **54 Sq.Mt / 591 Sq.Ft**
- **Sought After Hove Avenue**
- **Parking Zone - N**
- **Period Features**
- **Two Double Bedrooms**



This stunning mansion-style flat is located on the first floor of a grand period building with a bay frontage, offering a captivating living space. Positioned right next to Hove seafront, you'll find yourself just a few steps away from the beach and the beautiful promenade.

The flat is nicely presented and boasts an attractive neutral colour scheme throughout, catering to a wide range of tastes. With a well-thought-out layout ensures a comfortable living environment.

Upon entering, you'll be greeted by the signature lounge, a spacious room that offers versatility to accommodate both a lounge suite and a dining area if desired. The generously sized kitchen is another superb space, featuring a good range of units and appliances.

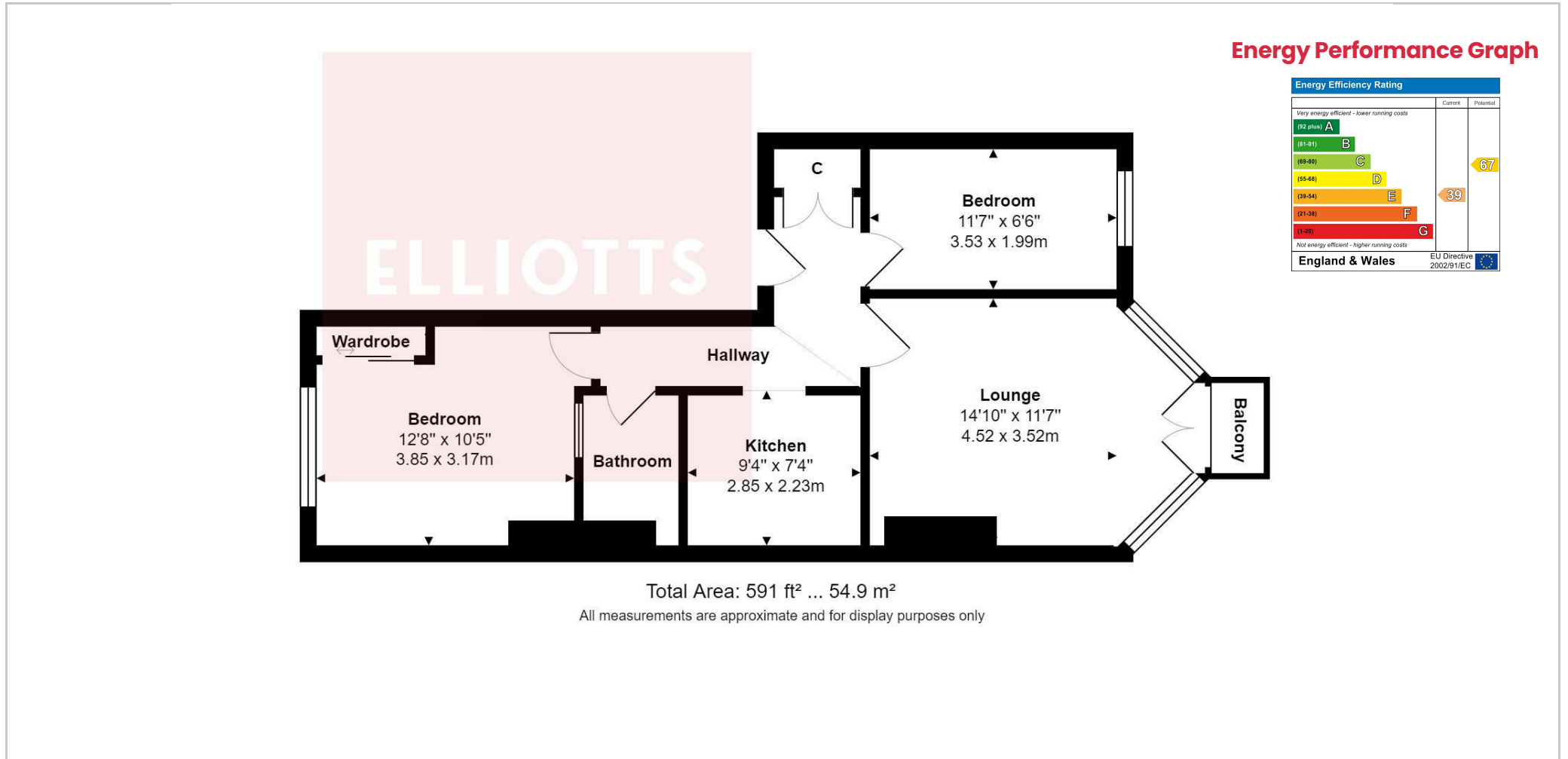


The flat comprises two bedrooms, with the main bedroom particularly spacious and offering built in wardrobes.

In summary, this first floor mansion-style flat is a true gem, presenting a bright and well-presented living space. Its enviable location next to Hove seafront, along with its tasteful decor and practical layout, make it a highly desirable property. Perfect for those seeking a stylish seaside home, this flat offers both comfort and charm.



Floorplan



Viewing

Please contact us on 01273 773399 if you wish to arrange a viewing appointment for this property or require further information.

The particulars are set out as a general outline only for the guidance of intended purchasers or lessees, and do not constitute, any part of a contract. Nothing in these particulars shall be deemed to be a statement that the property is in good structural condition or otherwise nor that any of the services, appliances, equipment or facilities are in good working order. Purchasers should satisfy themselves of this prior to purchasing.

2 Church Road, Hove, East Sussex, BN3 2FL

Tel: 01273 773399 Email: mail@elliottsestateagents.co.uk Website: www.elliottsestateagents.co.uk